



Crystal Palace Park Road, SE26 6UQ  
£375,000

02087029333  
[crystalpalace@pedderproperty.com](mailto:crystalpalace@pedderproperty.com)

**pedder**  
We live local





## In General

- Two double bedrooms
- Purpose built apartment
- Share of freehold
- 749 Sq ft/ 69.9 sq m
- Garage
- Convenient location
- No onward chain

## In Detail

A spacious two bedroom second floor purpose built apartment ideally located moments from Crystal Palace Park.

Boasting 749 sq ft / 69.6 sq m the apartment is quietly set back from the road within this private low-rise development. There are two well proportioned bedrooms, 159 reception and separate kitchen with enough work space for those who enjoy cooking.

Further benefits include communal gardens, residents off street parking, separate garage and a share of the freehold.

The location works well for access to Crystal Palace and both Penge East / West rail links. Nearby leisure and shopping amenities include central Crystal Palace Triangle, Anerley Parade and the High Street, whilst also just a short walk to 200 acres of parkland.

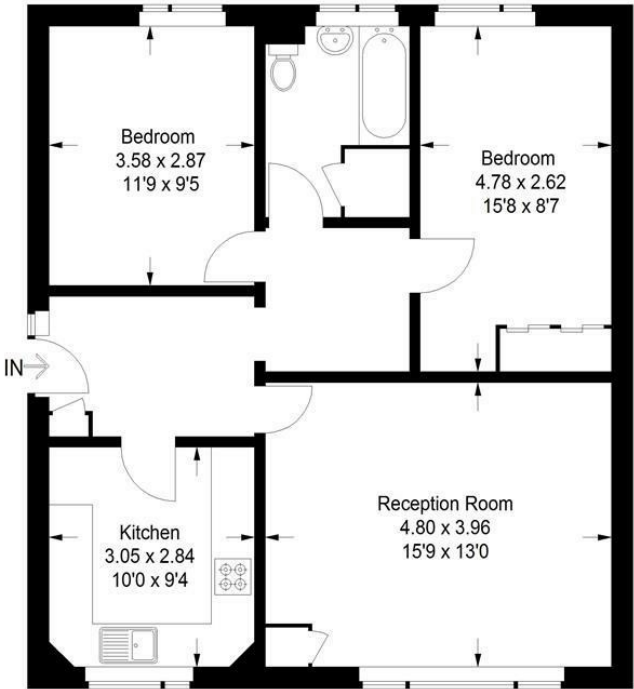
EPC: C | Council Tax Band: C | Lease: 993 years remaining | SC: £1,200 | GR: N/A | BI: Incl in SC



# Floorplan

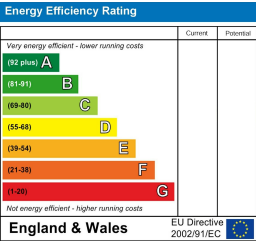
## Mayne Court, SE26

Approximate Gross Internal Area  
69.6 sq m / 749 sq ft



## Second Floor

Copyright [www.pedderproperty.com](http://www.pedderproperty.com) © 2024  
These plans are for representation purposes only as defined by RICS - Code of Measuring Practice. Not drawn to Scale. Windows and door openings are approximate. Please check all dimensions, shapes and compass bearings before making any decisions reliant upon them.



Pedder Property Ltd trading as Pedder for themselves and for the vendor/landlord of this property whose agents they are, give notice that (1) these particulars do not constitute any part of an offer or contract, (2) all statements contained within these particulars are made without responsibility on the part of Pedder or the vendor/landlord, (3) whilst made in good faith, none of the statements contained within these particulars are to be relied upon as a statement of representation or fact, (4) any intending purchaser/tenant must satisfy him/herself by inspection or otherwise as to the correctness of each of the statements contained within these particulars, (5) the vendor/landlord does not make or give either Pedder or any person in their employment any authority to make or give representation or warranty whatsoever in relation to this property.